

Thank you for purchasing "KOSO radar series tochometer", led night-back-lighted, multi-function in one. easy-wiring. clear-controlling and easy-using.

Notice

1. The lcd meter is apply for **DC 12V**.
2. For installation, please follow the steps described in manual. Any damage caused by wrong installation shall be imputed to the users.
3. To avoid the short circuit, please don't pull the wire when installing. Don't break or modify the wire terminal.
4. Do not disassemble or change any parts excluding the manual description.
5. The interior examination or maintenance should be executed by our professionals.

MARK MEANING:

NOTE You could get the installation details from the information behind the mark.

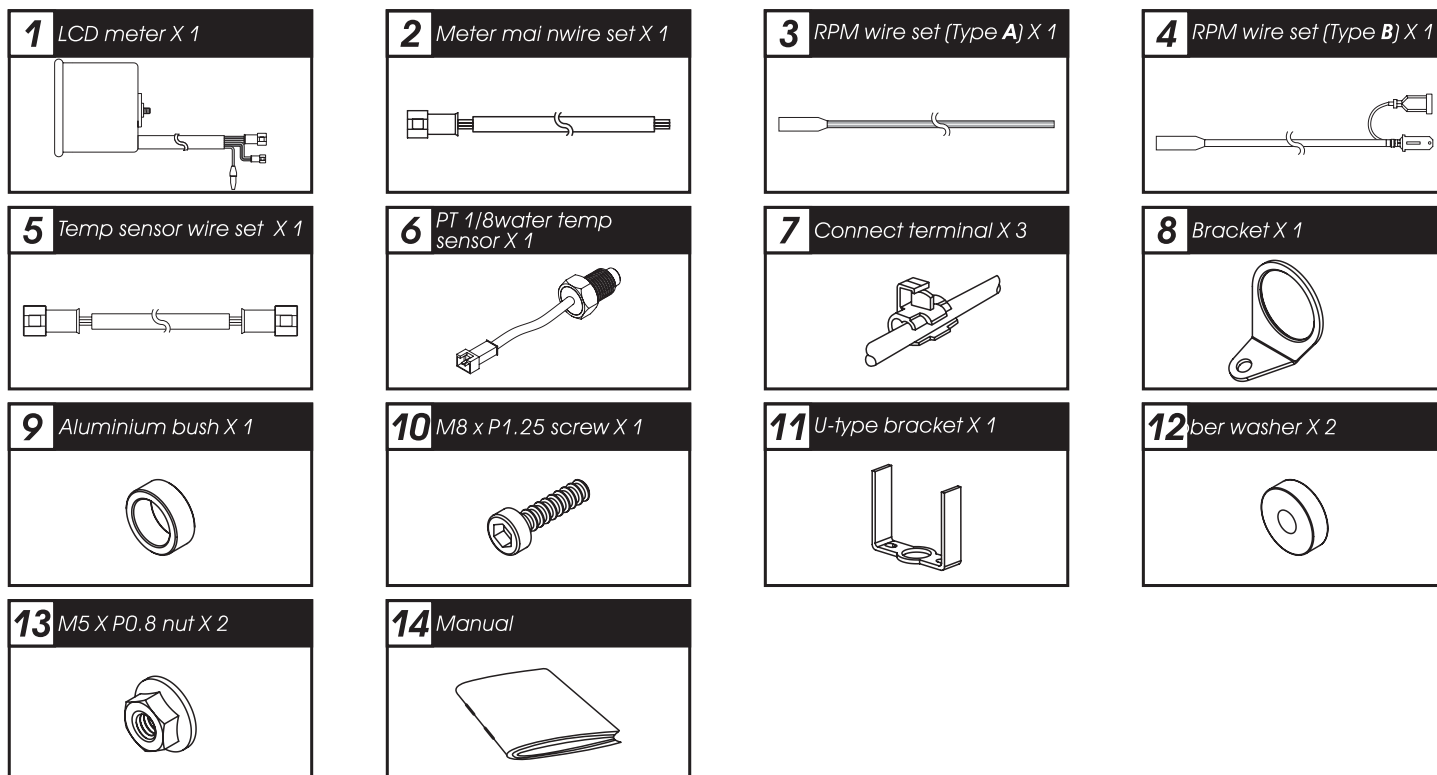
△ Some processes must be followed to avoid the affection caused by wrong installation.

△ WARNING! Some processes must be followed to avoid damages to yourself or the public.

△ CAUTION! Some processes must be followed to avoid the damage to the vehicle.

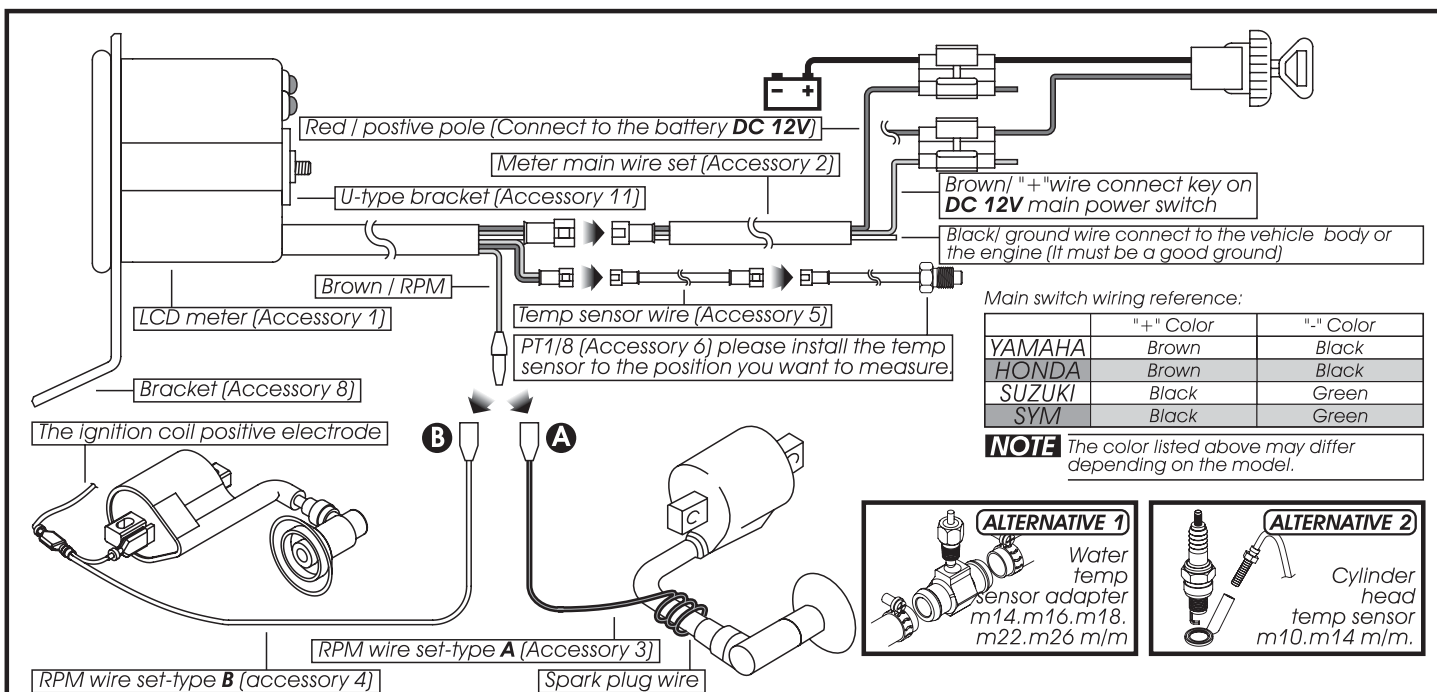


1 Accessory



NOTE Please contact the local distributor if the items you open are not the same, with the above-listed one.

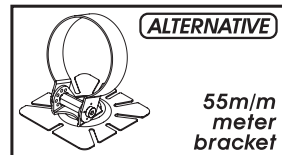
2 Wiring installation instructions



⚠ We provide 2 ways to get the rpm signal-sensor a & sensor b. If there are interruptions, you could change the sensor wiring to get better signal.

CAUTION! Just wrap the RPM wire (A) around the spark plug wire. Do not connect them! We also suggest you to replace the "R" type spark plug in the mean time to get better signal. For the model more than one piston, please catch the signal from the first cylinder coil wire. For the model with more than one piston, please just connect the rpm sensor wiring to one of the ignition coil positive electrodes.
※Please make sure that the ignition coil positive electrode before connecting the RPM sensor wiring! Wrong installation will cause the meter broken!

NOTE We also provide diffent size temp sensor and adaptor M10 X 1.0 / M12 X 1.5 / M14 X 1.25 / M14 X 1.5 / M16 X 1.5 / M18 X 1.5 for choosing.



3 Instruction of function

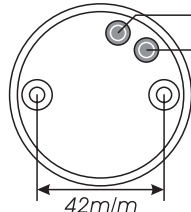


Tachometer

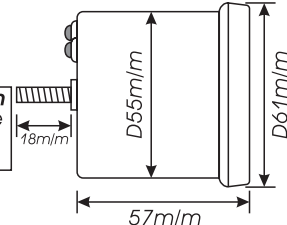
- Display range: 0 ~ 16500 RPM.
- Display unit: 100 RPM.

Temperature

- Display range: 0 ~ 150 °C (32 ~ 302 °F).
- Display unit: 0.1 °C (°F).



Temperature unit switch
in main screen, press the **mode button** to alternate °C with °F.



4 Strokes / pistons setting instruction



In main screen, Press THE **SET & MODE button** for 3 seconds to enter the **STROKE SETTING SCREEN**.



EX. we want to set the stroke as 4 stroke 4 piston. press **mode button** to choose the stroke we want.

⚠ now **2C** (The number you want to set) & **RPM** is flashing.

校對:



Press **set button** to enter the piston setting screen.



Press **mode button** 3 times, to choose the pistons setting.

⚠ Now **1P** (The number you want to set) & **RPM** is flashing.



Press **set button**, to back the main screen.



Main screen.

P.S.



- Make sure the correct strokes and pistons before setting.
- Make sure the input is correct, or the RPM output will be incorrect.
- We define the engine with the ignition system ignites every 360 degree as 2-stroke and the engine with the ignition system ignites every 720 degree as 4-stroke.
- Some 4-stroke bikes with one single piston are igniting 360 degree once, so the setting should be the same as the bike with 2-stroke and one piston engine.
- 2-stroke pistons are 1,2,3,4. 4-stroke pistons are 1,2,3,4,5,6,8,10,12.