



Thank you for purchasing "KOSO radar series speedometer", led night-back-lighted, multi-function in one. easy-wiring. Clear-controlling and easy-using.

## Notice

- 1.The lcd meter is apply for DC 12V.
- 2.for installation, please follow the steps described in manual. any damage caused by wrong installation shall be imputed to the users.
- 3.don't break or modify the wire terminal. to avoid the short circuit, please don't pull the wire when installing.
- 4.do not disassemble or change any parts excluding the manual description.
- 5.the interior examination or maintenance should be executed by our professionals.
- 6.if you find the needle is auto-reset by itself, please check your battery situation. if the battery can't provide enough voltage, it will cause the meter auto-reset.

### MARK MEANING:

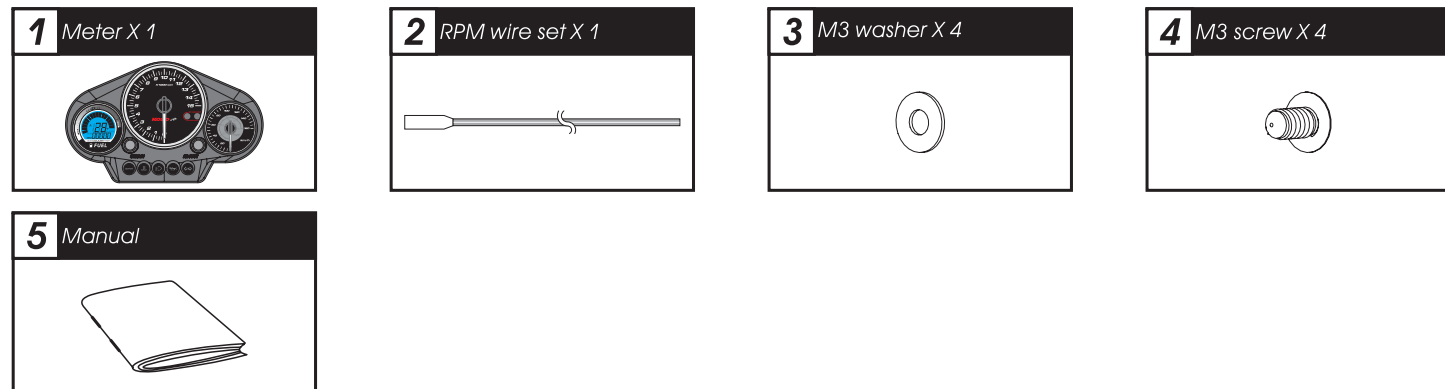
**NOTE** You could get the installation details from the information behind the mark.

△ Some processes must be followed to avoid the affection caused by wrong installation.

△ **WARNING!** Some processes must be followed to avoid damages to yourself or the public.

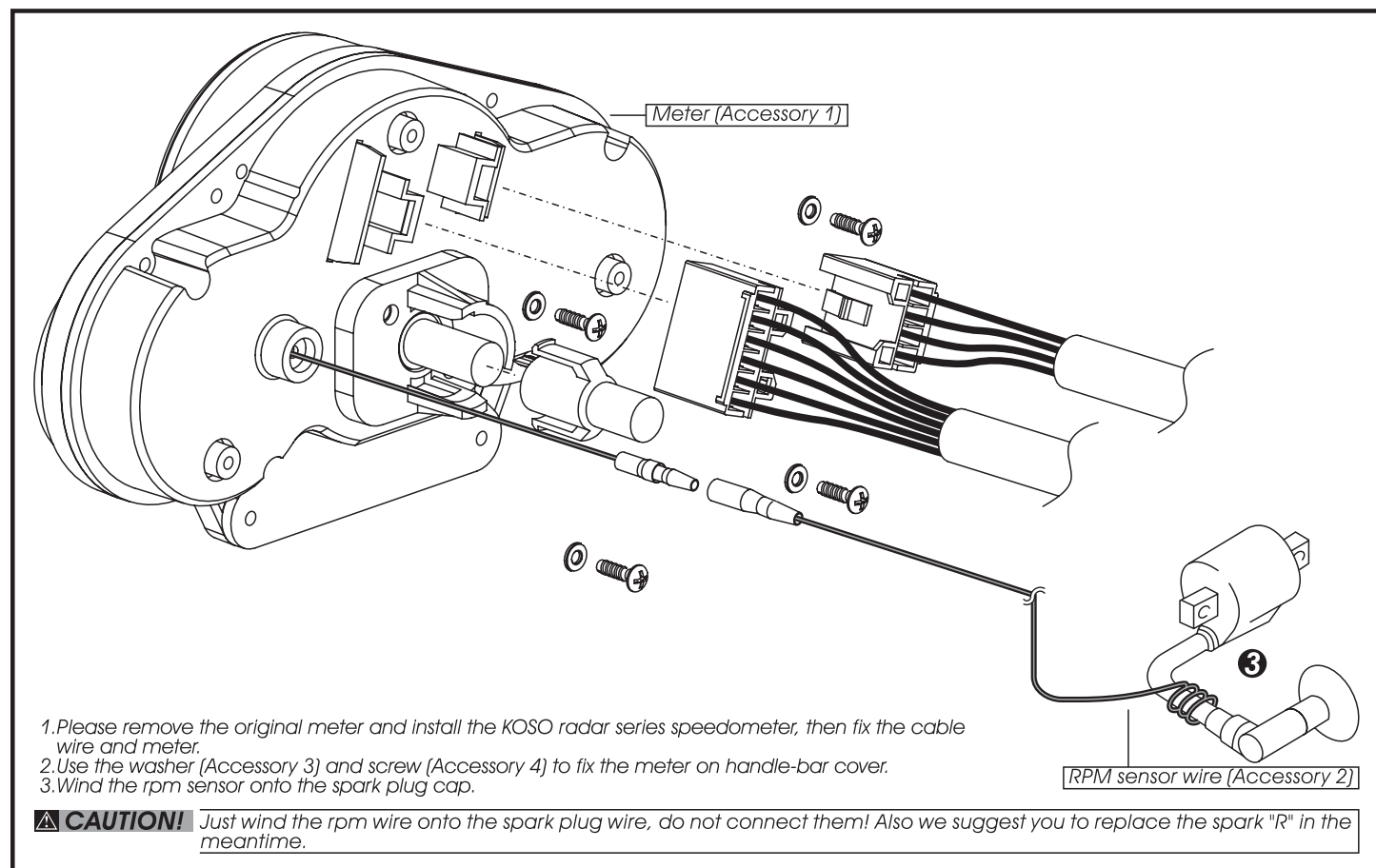
△ **CAUTION!** Some processes must be followed to avoid the damage to the vehicle.

## 1 Accessory

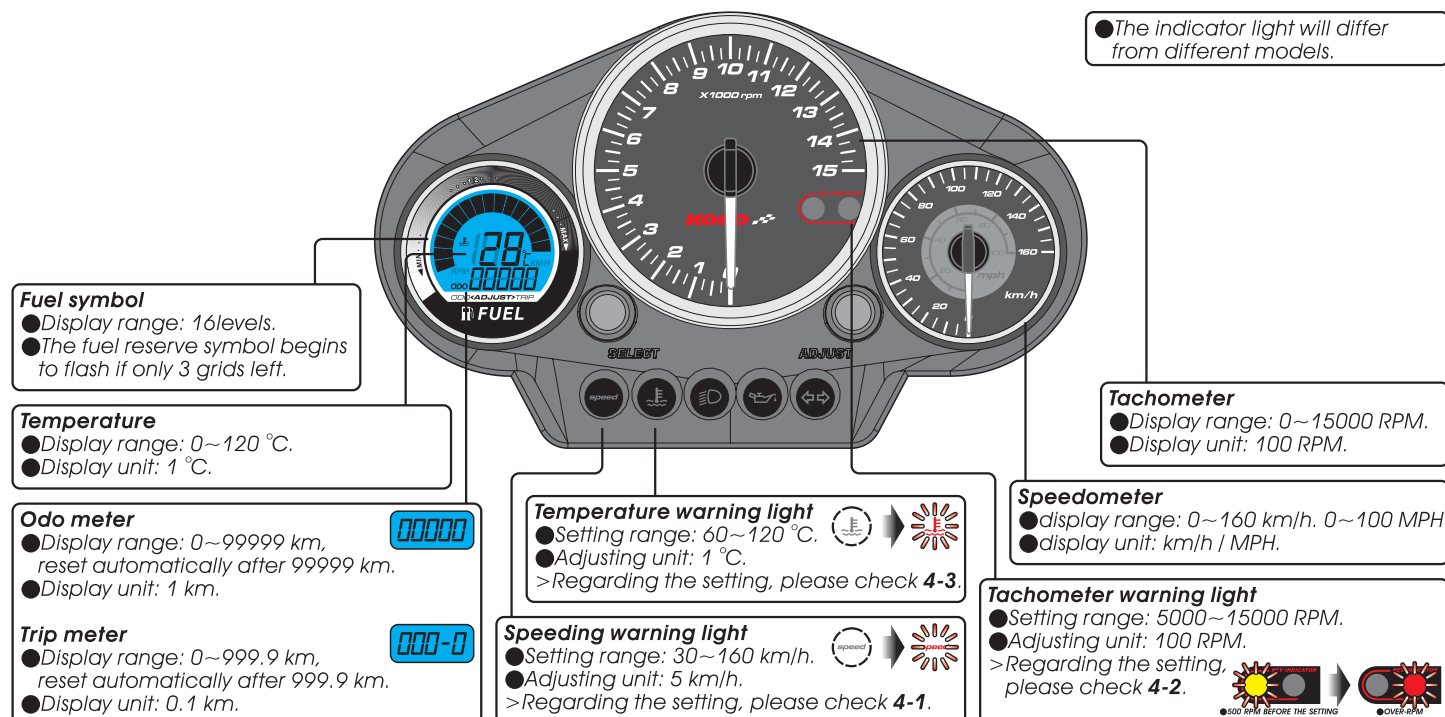


**NOTE** Please contact the local distributor if the items you open are not the same, with the above-listed one.

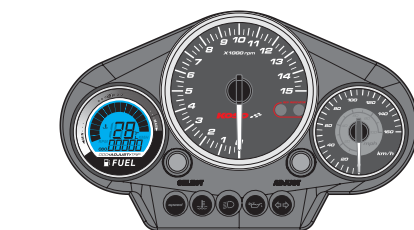
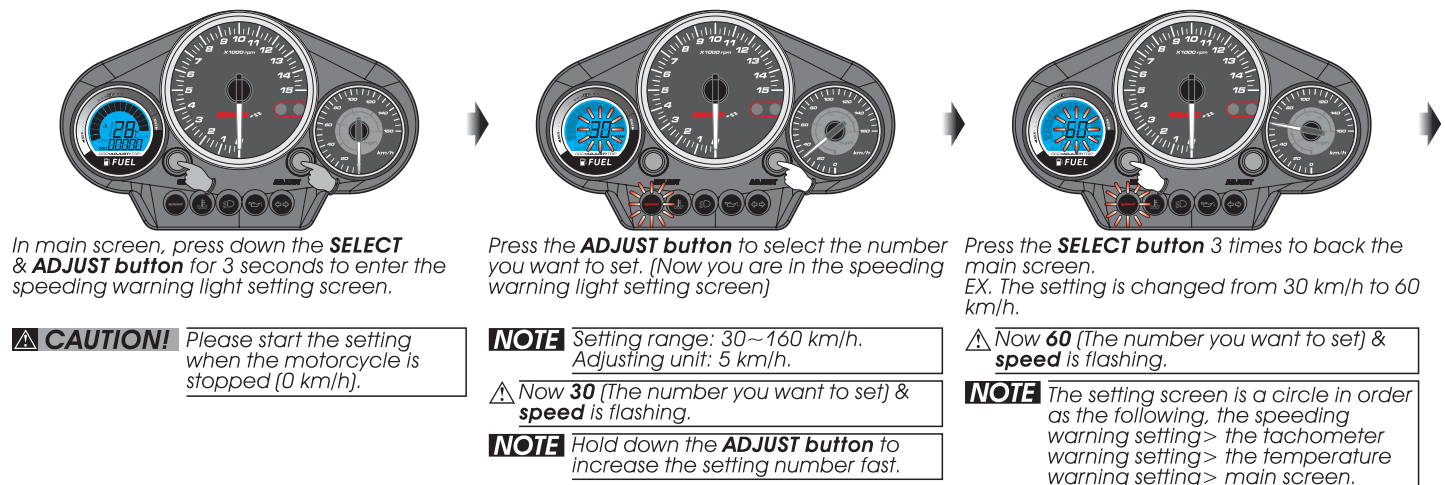
## 2 Wiring installation instructions



## 3 Function instruction

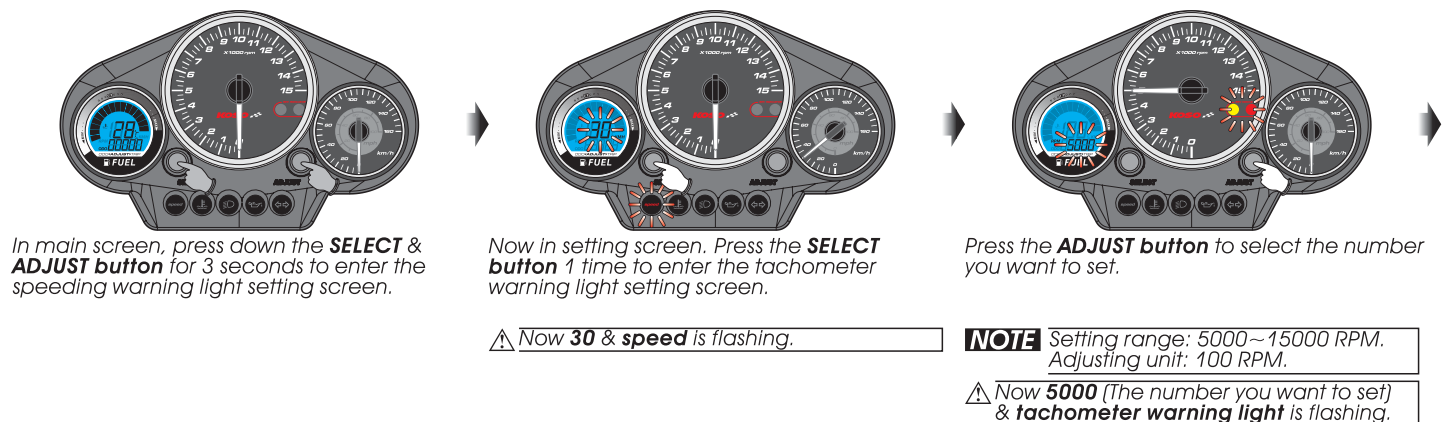


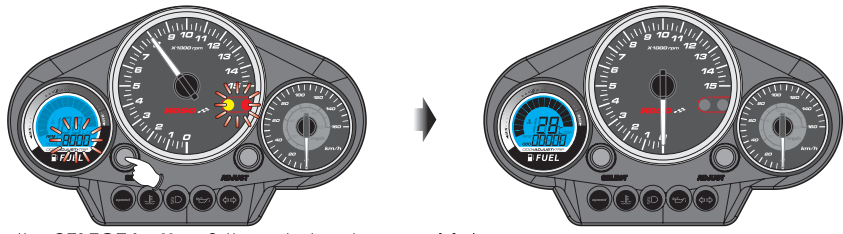
### 4-1 Speeding warning light setting instruction.



Main screen.

### 4-2 Tachometer warning light setting instruction.



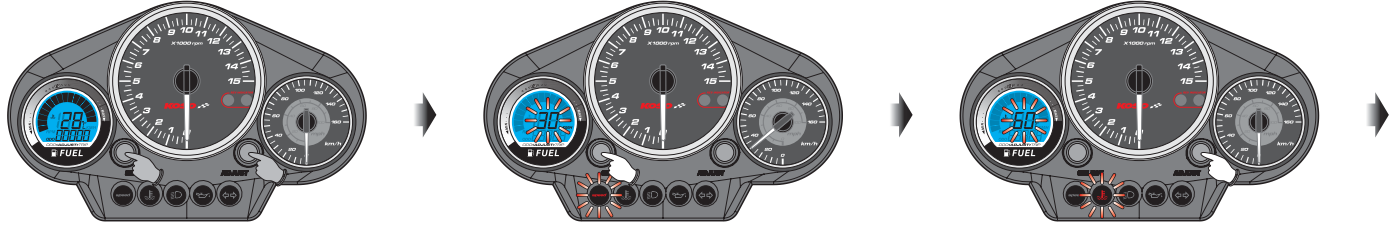


Press the **SELECT** button 2 times to back the main screen.  
EX. The setting is changed from 5000 RPM to 8000 RPM.

⚠ Now **8000** (The number you want to set) & **tachometer warning light** is flashing.

Main screen.

#### 4-3 Temperature warning light setting instruction.



In main screen, press down the **SELECT** & **ADJUST** button for 3 seconds to enter the speeding warning light setting screen.

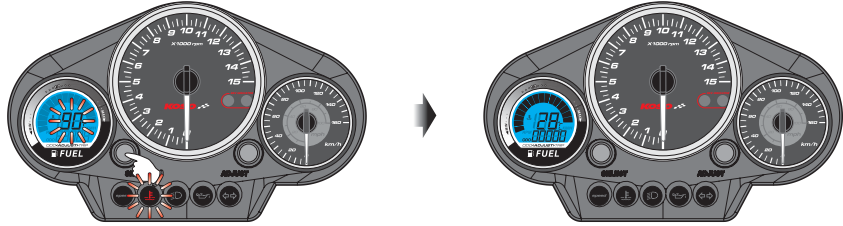
Now in setting screen, press the **SELECT** button 2 times to enter the temperature warning light setting screen.

Press the **ADJUST** button to select the number you want to set.

⚠ Now **30** & **speed** is flashing.

**NOTE** Setting range: 60~150 °C.  
Adjusting unit: 1 °C.

⚠ Now **60** (The number you want to set) & **temperature warning light** is flashing.

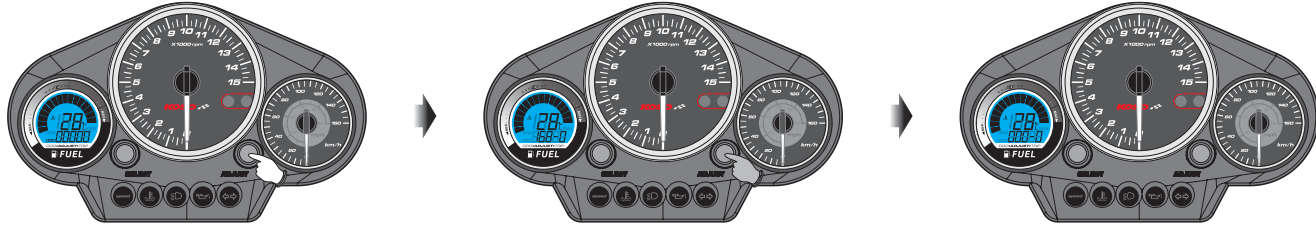


press the **SELECT** button to back the main screen.  
EX. The setting is changed from 60 °C to 90 °C.

Main screen.

⚠ Now **90** (The number you want to set) & **temperature warning light** is flashing.

#### 5 Trip reset instruction



In main screen, press the **ADJUST** button to switch the odometer to trip meter.

Press down the **ADJUST** button for 3 seconds, and then the trip meter will be reset.

Now the trip meter is reset.