

INSTALLATION



Thanks for purchasing our KOSO Product. Before operating this unit, please read carefully the instruction sheet and retain it for future reference.

Notice

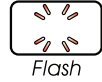
1. This meter works on DC 12 volts applications only.
2. For proper installation, please follow the steps described in the instruction sheets. Any damages caused by wrong installation shall be imputed to the users.
3. Don't break or modify the wire terminals. To avoid any short circuit, do not pull the wires out of the terminal when installing.
4. Do not disassemble or change any parts.
5. Opening the instrument will void any warranty. Maintenance or repair should be executed by our professionals only.

MARK MEANING:

Some procedures must be followed to avoid damages to the instrument.

WARNING! Some procedures must be followed to avoid injuries to the user or others.

CAUTION! Some procedures must be followed to avoid damages to the vehicle.



Flash



Press the button once



Press the button for 3 seconds

1-1 Accessories

1 Meter X 1	2 Speed sensor X 1	3 M8/ S type speed sensor bracket X 1	4 M10/ S type speed sensor bracket X 1
5 M5X5L Hexagon screw X 2	6 D6 X 5L mm magnet x6	7 2.5 mm Allen key x1	8 Meter bracket X 1
9 Handle bar clamp X 1	10 Rubber X 1	11 M6 X 18L Allen screw X 1	12 M5 X P0.8 nut X 3
13 M6 X P1.0 nut X 1	14 M5 washer X 3	15 M6 washer X 1	16 M6 Aluminum bushing X 1
17 Mid-way connector X 8			

NOTE Please contact your local distributor if the items received in the box are not the same as the one listed above.

1-2 Optional accessories

1 Disc magnet screw	2 Active speed sensor	3 L TYPE speed sensor bracket
----------------------------	------------------------------	--------------------------------------

NOTE The optional active speed sensor can read up to 20 pulses and do not require the installation of any magnets to pick up the speed signal. Note that the passive speed sensor supplied with the instrument can read up to 6 pulses.

NOTE Some of the optional accessories might not be available in your country. Contact your local distributor to get more details.

2-1 Wiring installation instruction

Main power switch wire reference:

	Power	Key on	Ground
YAMAHA	Red	Brown	Black
HONDA	Red	Red / Black	Green
SUZUKI		Black	Green
KAWASAKI	White	Brown	Black / Yellow
KYMC	Red	Black	Green
SYM	Red	Black	Green
PGO	Red / White	Orange	Black

Fuel indicator wire reference:

	Green	KYMC	Yellow / White
YAMAHA	Green		
HONDA	Yellow / White	SYM	Yellow / White
SUZUKI	Yellow / White	PGO	Gray
KAWASAKI	Black / L Green		

NOTE The fuel sensor is electronic type, do not connect in parallel with the original wire - otherwise the fuel gauge won't display. The wrong installation of the fuel wire might damage the instrument.

NOTE When connecting the power wire, please follow carefully the instruction. If the red & brown wires are connected in parallel, the meter won't work properly.

2-2 Installation instructions

When installing, please follow the process.

1. Meter (Accessory 1)
2. Meter bracket (Accessory 8)
3. M5 washer X 3 (Accessory 14)
4. M5XP0.8 nut X 3 (Accessory 12)
5. M6XP1.0 Screw (Accessory 13)
6. M6 washer (Accessory 15)

A Use the meter bracket (Accessory 8), aluminum bush (Accessory 16) to install the speedometer on the handle bar stem.

B Use the meter bracket (Accessory 8), handle bar clamp (Accessory 9), rubber (Accessory 10) and the M6XP1.0 nut (Accessory 13) to install the meter on the handle bar.

2-3 Installation instruction

Put the magnet into the brake disc screw hole.

Install the s type sensor bracket.

Adjust the sensor bracket position to make sure the sensor is facing the magnet to prevent bad speed signal.

Install the speed sensor on the bracket.

In order to get a good speed signal, the distance between the speed sensor and magnet should be under 2 mm.

P.S. Higher number of magnets installed on the disk brake will result in a faster speed display on the gauge. The letter "N" on the magnets must face the speed sensor in order to pick up correctly the speed.

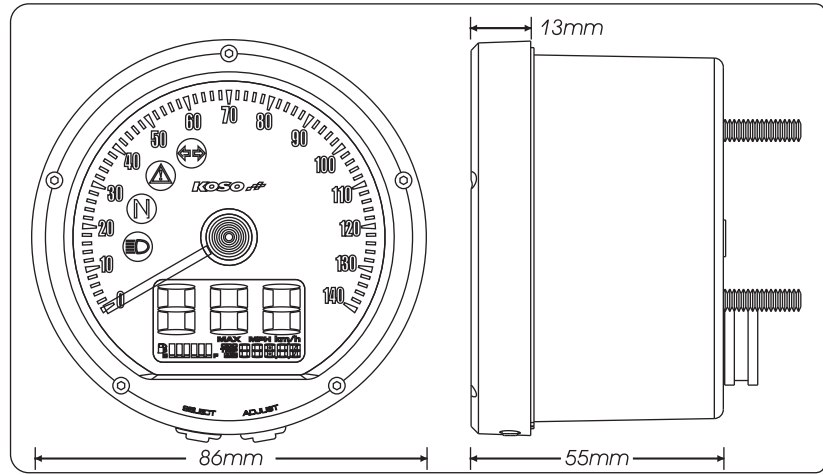
EX 1: If the disk brake has 3 screws, you can install 1 or 3 magnets.

EX 2: If the disk brake has 4 screws, you can install 1, 2 or 4 magnets.

EX 3: If the disk brake has 5 screws, you can install 1 or 5 magnets.

EX 4: If the disk brake has 6 screws, you can install 1, 2, 3 or 6 magnets.

3-1 Dimensional drawing



3-2 Basic function instruction

Needle Speedometer
●Display range:0 ~ 140 km/h(mph)

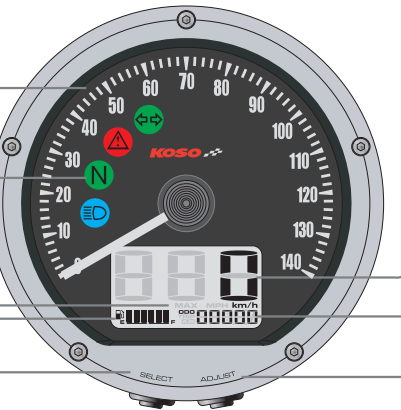
Telltale
●Turn signal (Green)
●Warning (Red)
●Neutral (Green)
●High beam (Blue)

MAX RECORD
●Digital speed:0~360 km/h (0~225 mph)
●Needle Display:0 ~ 140 km/h(mph)

Fuel Level
●Display range:6 levels.
●The fuel level begins to flash when only 1 level is left.

Select button
●Press the Select button in the main screen to switch between MAX record.

Digital Speedometer
●Display range:0 ~ 360 km/h (0~225 mph)
●Display unit:1 km/h (mph)



Odometer
●Display range:0 ~ 99999 km (mile), reset automatically after 99999 km (mile).
●Display unit:1 km (mile)

Trip meter A/B
●Display range:0 ~ 999.9 km (mile), reset automatically after 999.9 km (mile).
●Display unit:0.1 km (mile)

Colck
●24 H
Volt meter
●Display range:DC 8~ DC 18V
●Flashing warning when voltage is lower than 11.5V or higher than 15.5 V.

Adjust Button
●Press the Adjust button in the main screen to switch between ODO, TripA/B, Clock, Volt meter.

3-3 Functions

●Speedomete	Display range:0 ~ 360 km/h (0 ~ 225 mph) Display unit:1 km/h (mph)
○Display internal	<0.5 second
○Oodmeter	Display range:0 ~ 99999 km (mile),reset automatically after 99999 km (mile) Display unit:1 km (mile)
○Trip meter A/B	Display range:0 ~ 999.9 km (mile),reset automatically after 999.9 km (mile) Display unit:0.1 km (mile)
○Tire circumference	Setting range:300~2,500 mm Setting unit:1mm Sensitive point:1~20
●Fuel meter	Display range:6 levels Display unit:Each level represent 16.6% Setting range:100Ω,250Ω,510Ω,1200Ω,SW
●Clock	24 H
●Volt meter	Display range:DC 8~18V Flashing warning when voltage is lower than 11.5 V or higher than 15.5 V

●Maintenance Mileage	Display range:0~99999 km(mile) Display range:1 km (mile)
●ODO setting	Display range:0~99999 km(mile) Display range:1 km (mile)
●Backlight brightness	Setting range:1-5 (Darkest)~5-5 (Brightest) Setting unit:Each level represents 20%
●Effective voltage	DC 12 V
●Effective temperature range	-10~+60°C
●Meter standard	JIS D 0203 S2
●Meter size	85.5 X 54.5 mm
●Meter weight	Around 330 g
●Indicator light color	Turn signal (Green) Warning (Red) Neutral (Green) High beam (Blue)

NOTE Design and specifications are subject to change without notice!

3-4 Button function instruction

Press the Select button

- 1.In main screen, press the Select button to enter the MAX record display.
- 2.In setting screen, press the Select button to choose the function you want to set.

Hold the Select button for 3 seconds

- 1.In setting screen, hole pressing the Select button for 3 seconds to go back to the main screen

Press the Adjust button

- 1.In main screen, press the Adjust button to choose the odometer, trip A, trip B, clock, volt.
- 2.In the setting screen, press the Adjust button to change the setting numbers. If you keep pressing down the Adjust button the number will increase quickly.

Hold the Adjust button for 3 seconds

- 1.In the main screen, hole the Adjust button for 3 seconds to reset the trip A, trip B and the MAX record.
- 2.In the ODO screen, hole the Adjust button for 3 seconds to switch between the km/h and mile/h.

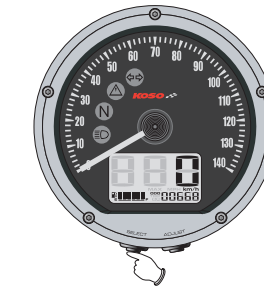
Hold the Adjust button

- 1.In the setting screen, hold the Adjust button to add quickly the set value.

Hold the Select + Adjust buttons for 3 seconds

- 1.In the main screen, hold the Select+Adjust buttons at the same time for 3 seconds to enter the setting screen.

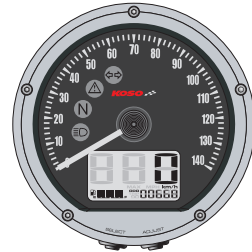
3-5 Main function instruction (Select button)



- In the main screen. Press the Select button one time to Max. record.

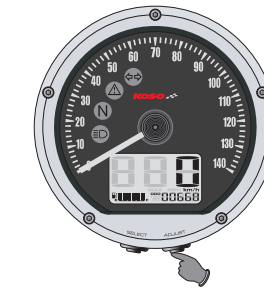


- In Max. record screen. Press the Select button one time to go back to the main screen (ODO).
- Hold the Select button for 3 seconds to reset Max. record.

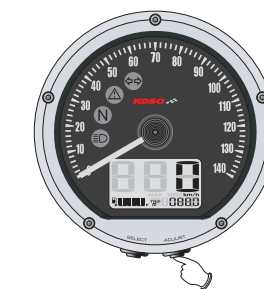
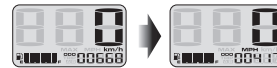


- Main screen.

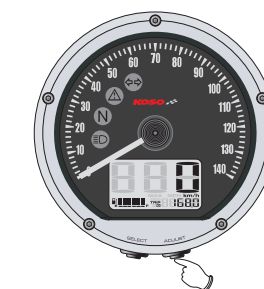
3-6 Main function switch instruction (Adjust button)



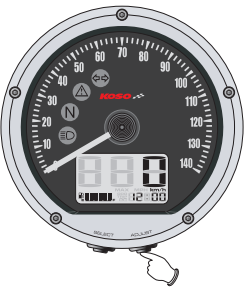
- In main screen (ODO). Press the Adjust button one time to enter the trip A screen.
- Hold the Adjust button for 3 seconds to set the meter in metric unit or imperial unit.



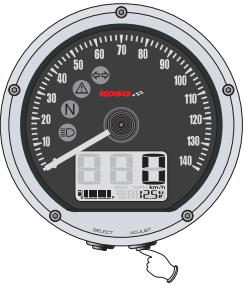
- In the trip A screen. Press the Adjust button one time to enter the trip B screen.
- Hold the Adjust button for 3 seconds to reset Trip A.



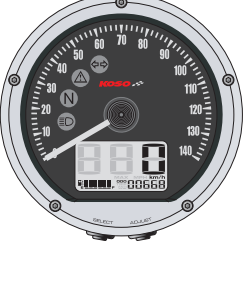
- In the trip B screen. Press the Adjust button one time to enter the clock screen.
- Hold the Adjust button for 3 seconds to reset Trip B.



- In the clock screen.. Press the Adjust button one time to enter the volt screen.

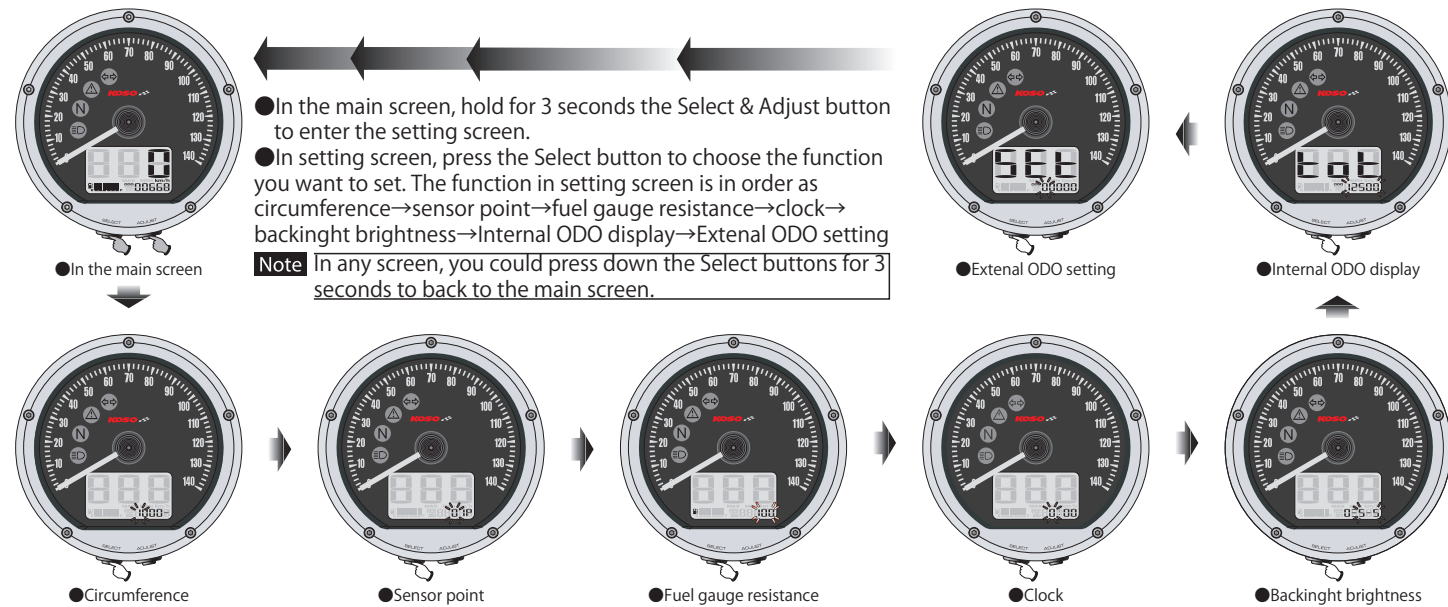


- In the volt screen. Press the Adjust button one time to go back to the main screen (ODO)

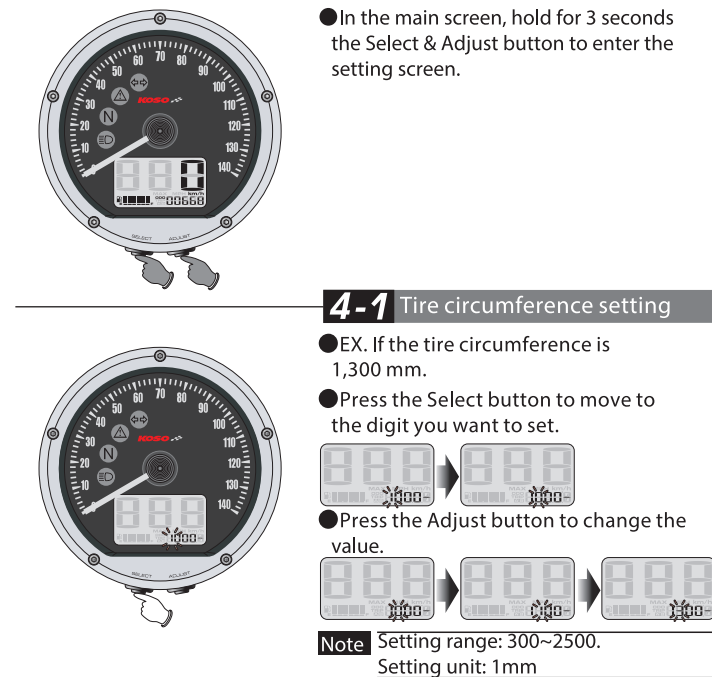


- Main screen.

3-7 Setting screen instruction

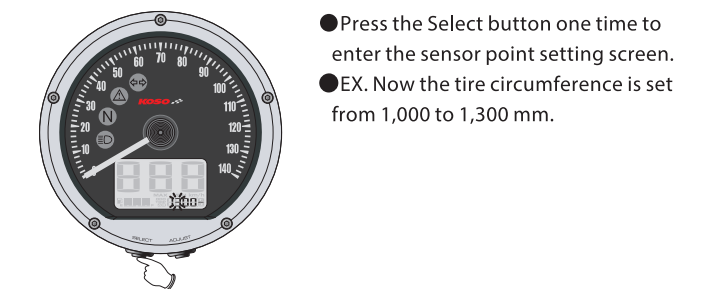
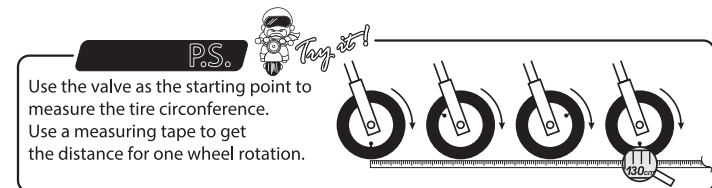


4 Entering setting screen

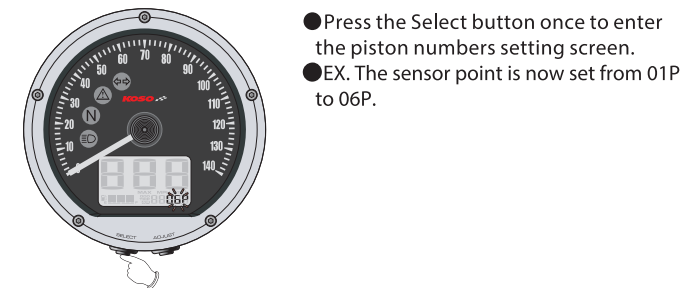
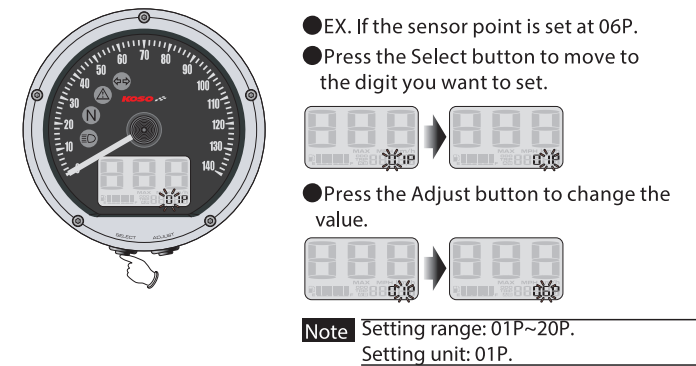


CAUTION!

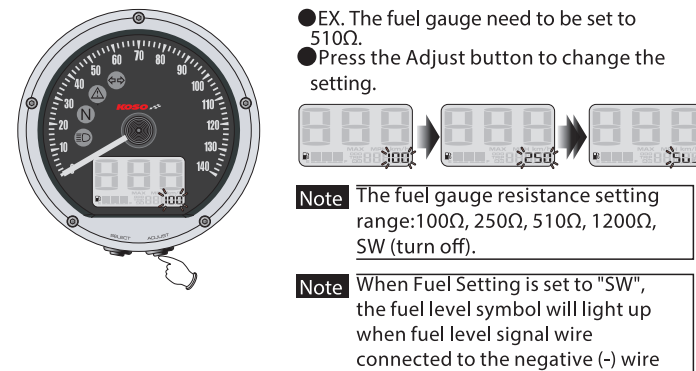
- Measure the circumference of tire which the sensor will be installed and keep note of the number of sensor points.
- The speed displayed on the meter will be affected by the setting. Make sure the tire size and the number of sensor point is correct before you set the value.



4-2 Sensor point setting

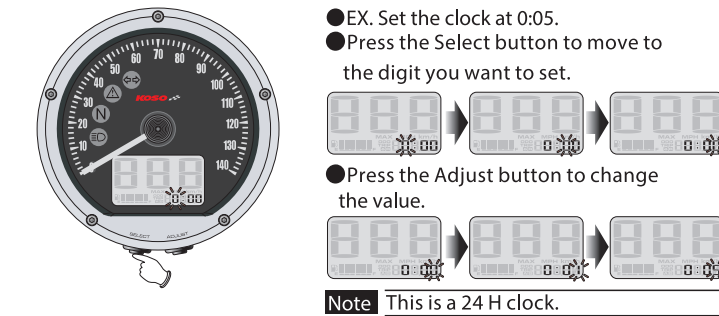


4-3 Fuel gauge resistance setting



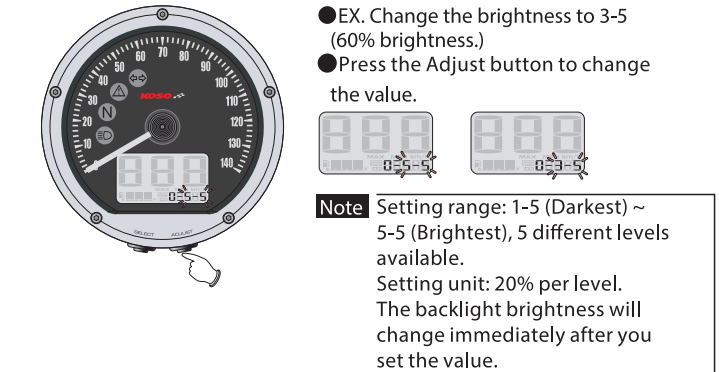
- Press the Select button once to enter the clock setting screen.
- EX. The setting has been changed from 100Ω to 510Ω.

4-4 Clock setting



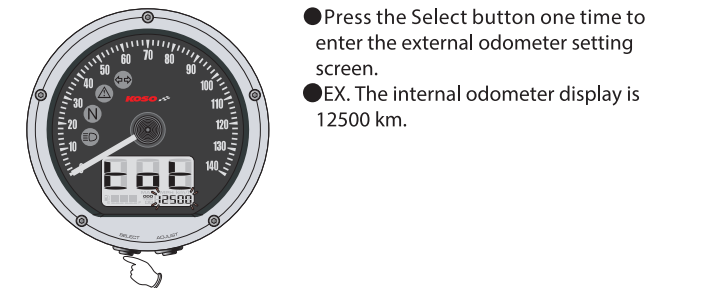
- Press the Select button once to enter the backlight brightness setting screen.
- EX. The clock has been set from 0:00 to 0:05.

4-5 Backlight brightness setting

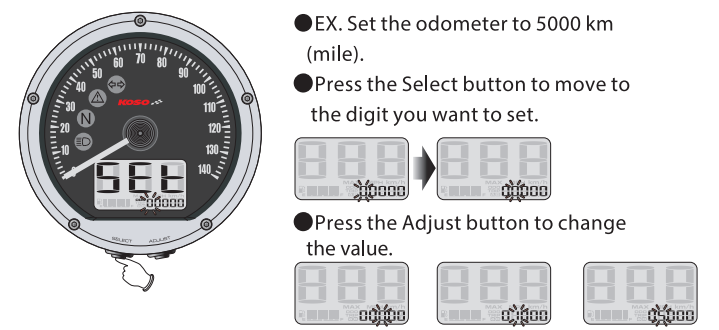


- Press the Select button once to enter the odometer display screen.
- EX. The backlight brightness has been set from 5-5 to 3-5

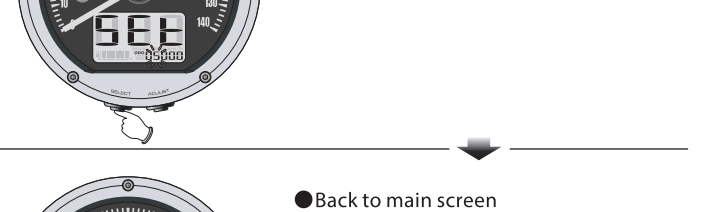
4-6 Odometer display



4-7 Odometer display



- Press the Select button once to go back to the main screen.
- EX. The odometer setting has been changed from 0 to 5,000 km (mile).



5 Trouble shooting

The following situation do not necessary indicate malfunction of the meter. Please check the folloeing before taking it in for repair.

Trouble	Check item	Trouble	Check item
The meter doesn't work when the power is on.	●The power is not supplied properly to the meter. →Make sure the wiring harness is connected correctly. The wires and fuse might be broken. →The battery is too old to supply enough DC 12V power to make the meter work.	Fuel gauge does not appear or appear incorrectly.	●Check your fuel tank. →Is there any fuel inside the tank? ●Check the wiring harness. →Is the wire connected properly? ●Check the setting. →Refer to the manual 4-3.
The meter shows wrong information. Speed does not appear or appear incorrectly.	●Check the voltage of your battery and make sure the voltage is over DC 12V. ●Make sure the speed sensor is connected properly. ●Check the tire-size setting. →Refer to the manual 4-1 & 4-2	The clock is incorrect.	●Did you connect the wires correctly. →Check the positive wire (Red) connectsed to the battery, and the main positive wire (Brown) connected to the main switch.

※If still the problem still can't be solve, Please contacy your local distributor to get assistance.